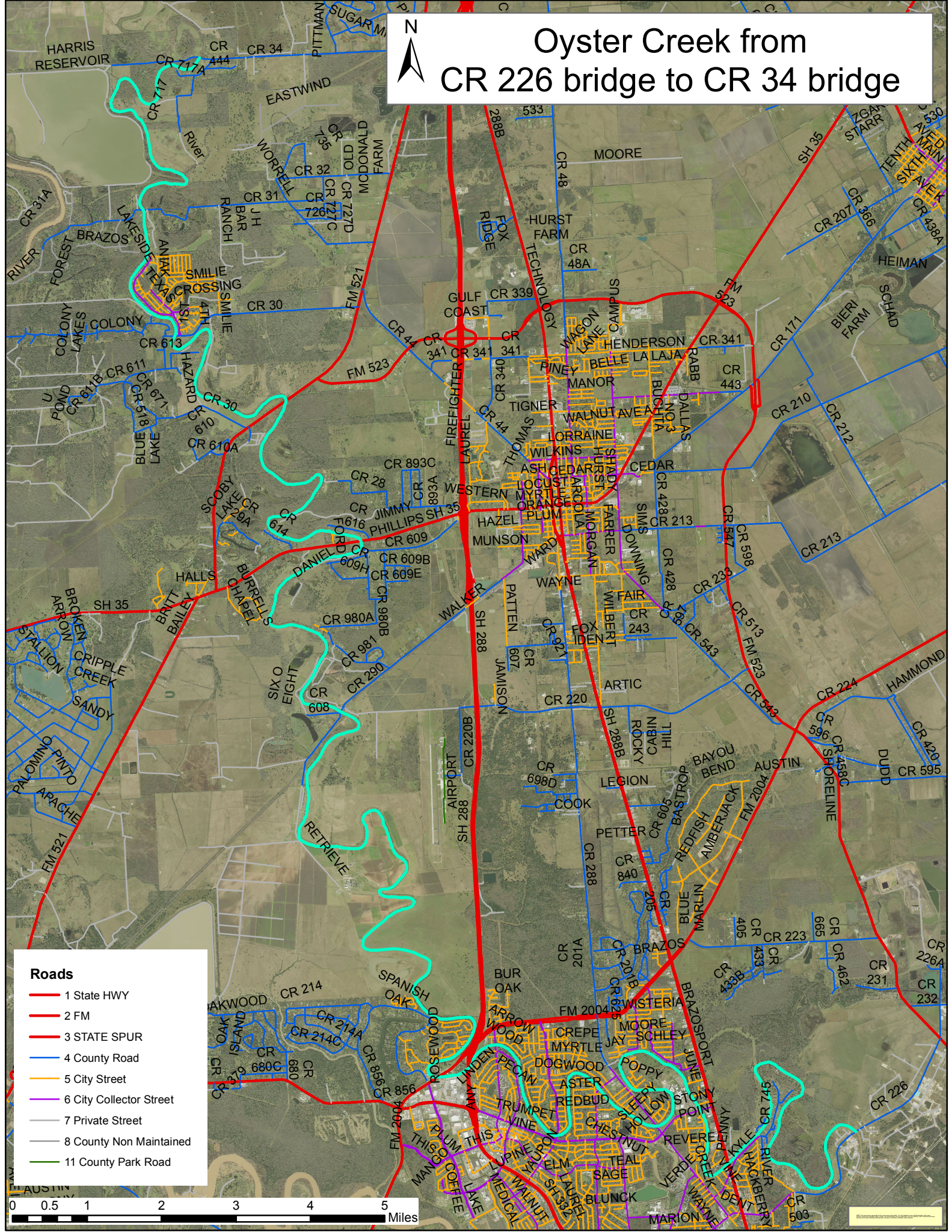




# Oyster Creek from CR 226 bridge to CR 34 bridge



- Roads**
- 1 State HWY
  - 2 FM
  - 3 STATE SPUR
  - 4 County Road
  - 5 City Street
  - 6 City Collector Street
  - 7 Private Street
  - 8 County Non Maintained
  - 11 County Park Road

